

Seville N

2070 SQ FT

4007 - 5 Avenue SW



- 9' ceilings on main floor
- Main floor bedroom with a tub/shower in the main floor bathroom
- Spice kitchen with sink and quartz counter
- 6 piece appliances
- Fireplace
- Pots and pans drawers
- Pot lights throughout main floor
- Luxury vinyl plank floors on the main floor
- Energy star rating triple pane windows, with Low E Argon filled glass
- Front attached double car garage
- Total of 5 bedrooms and 4 full baths
- Quiet space, can be used as a multi-faith room
- Bonus room on the second floor
- Railing added to the main and second floor

The Hills at Charlesworth Showhome

714 Charlesworth Way SW, Edmonton

587.521.5869

btate@bedrockhomes.ca

Job # CHH-0-034275 Lot 85, Block 1, Plan 172 3655

Notes:

bedrockhomes.ca

VISIT US AT ANY OF OUR SHOWHOMES!

Monday - Thursday 3-8pm, Weekends & Holidays 12-5PM

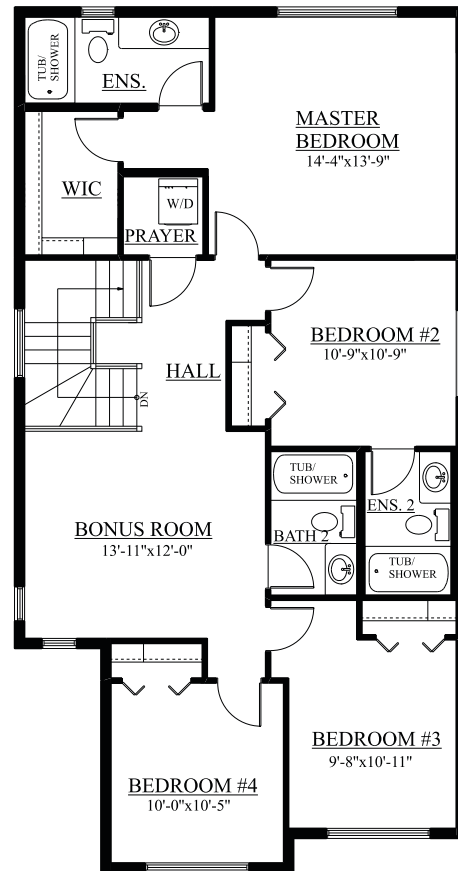
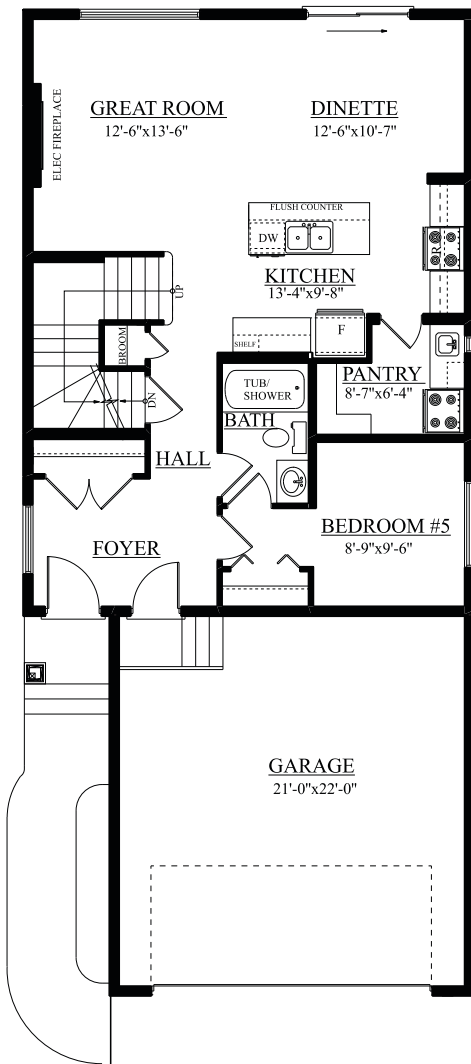


Seville N
 2070 SQ FT
 4007 - 5 Avenue SW



The Hills at Charlesworth Showhome
 714 Charlesworth Way SW, Edmonton
 587.521.5869
 btate@bedrockhomes.ca

Job # CHH-0-034275 Lot 85, Block 1, Plan 172 3655



bedrockhomes.ca

VISIT US AT ANY OF OUR SHOWHOMES!
 Monday - Thursday 3-8pm, Weekends & Holidays 12-5PM

